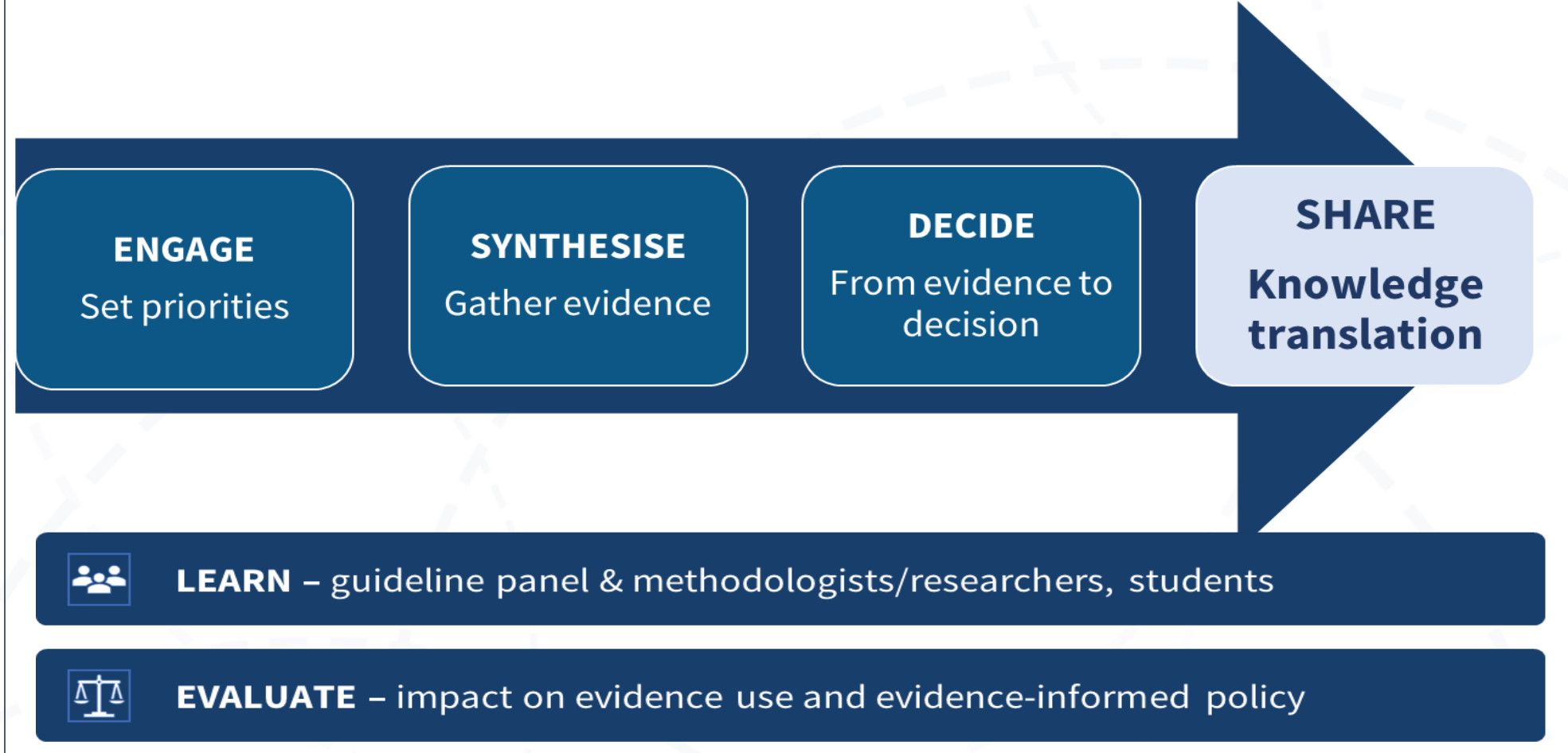


Denny Mabetha¹, Bey Schmidt^{1,2}

1. Health Systems Research Unit, South African Medical Research Council, 2. School of Public Health, University of the Western Cape, South Africa

BACKGROUND

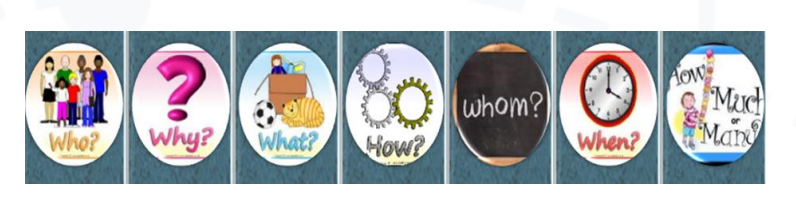
The Global Evidence, Local Adaptation (GELA) project aims to maximise the impact of research on poverty-related diseases by increasing researchers and decision-makers' capacity to use global research to develop locally relevant guidelines for newborn and child health in South Africa and other two Sub-Saharan countries.



OBJECTIVES

To promote the GELA project within South Africa, we adopted an Integrated Knowledge Translation (IKT) approach to:

- Systematically identifying key relevant stakeholders
- Developing an appropriate IKT strategy for stakeholder engagement
- Monitoring the implementation of the IKT strategy.



Getting the right **information** to the right **people** in the right **format** at the right **time** at the right **place** in the right **way** to influence (policy and practice) decision-making.

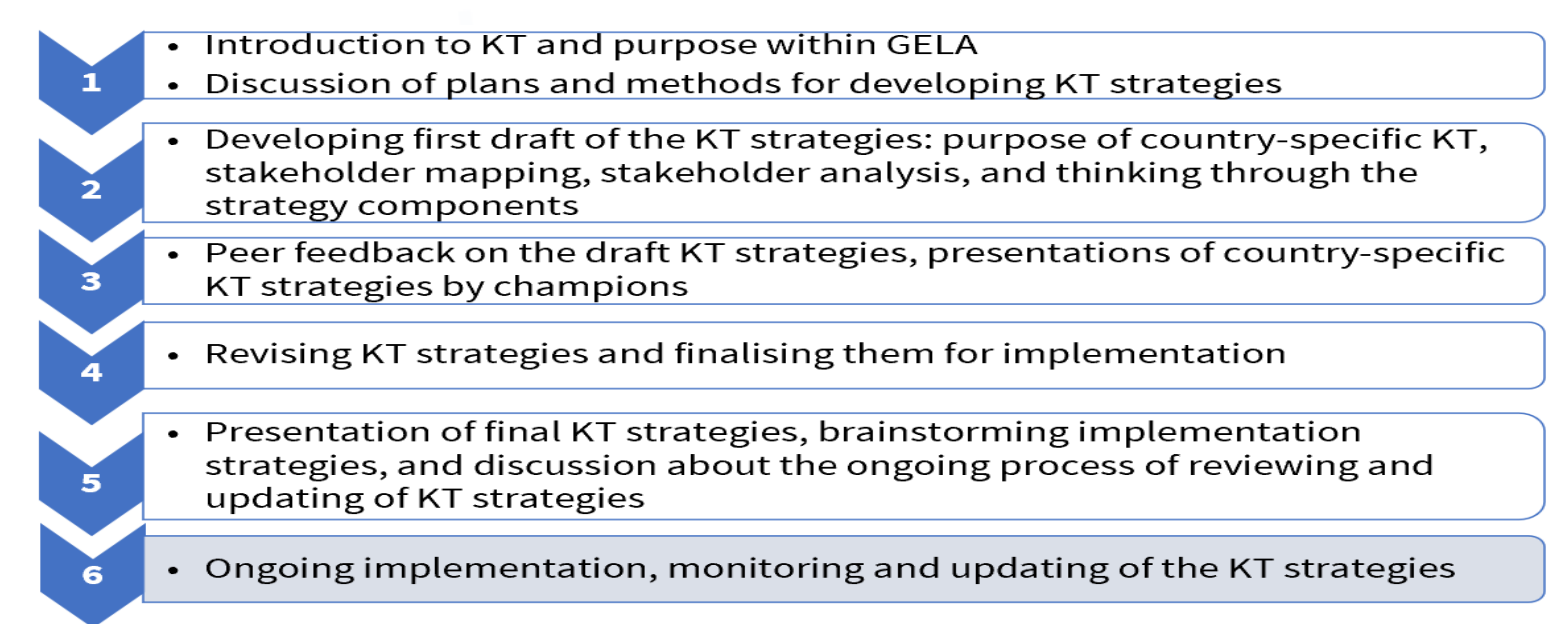
- Center for Evidence-Based Health Care, Stellenbosch University

METHODOLOGY

- The South Africa IKT champion (DM) worked with the GELA IKT coordinator (BMS) and the GELA project team members to develop, implement and monitor a context specific IKT strategy
- Data on the processes, opportunities, challenges and lessons learnt from implementing the IKT strategy amongst relevant stakeholders in South Africa, in year 1 (April 2022- March 2023) was recorded
- Data sources included working Group meetings held via Zoom, Process documents (flowcharts and templates) and Recorded reflections of the experiences of implementing and monitoring the IKT strategies

RESULTS

- Six-step process to develop- implement the IKT strategy:



- IKT process was influenced by:
 - Prior training in Evidence-Informed Decision-Making
 - Country team's buy-in to implement IKT
 - Making IKT a standing agenda item at weekly team meetings
 - Team's existing relationships with stakeholders
 - The use of different forums and mediums to engage stakeholders e.g email, WhatsApp, telephone

CONCLUSIONS

We learnt through implementing IKT within the GELA project in South Africa that IKT requires time and resources. However, the flexible and evolving nature of IKT enables IKT researchers to tailor their strategies according to their own capacities and stakeholders' needs and preferences. More research is needed on identifying and measuring IKT indicators for evaluation

ADVOCACY

IKT approach within GELA can help colleagues in similar African settings intentionally and systematically plan for IKT, and communication and dissemination of project outcomes

Acknowledgements and contact details

GELA Project is a partnership coordinated by Cochrane SA, including the Norwegian Institute of Public Health, the Norwegian University of Science and Technology, Western Norway University of Applied Science, Stellenbosch University, Cochrane Nigeria at the University of Calabar Teaching Hospital, Kamuzu University of Health Sciences, Malawi, Cochrane and the Stiftelsen MAGIC Evidence Ecosystem, Norway.

This project is part of the EDCTP2 programme supported by the European Union
 GELA is part of the EDCTP2 programme supported by the European Union – grant number RIA2020S-3303-GELA

Facebook Global Evidence Local Adaptation – GELA
YouTube : @GELAchild
Twitter : @CochraneAfrica
Website: Cochrane

